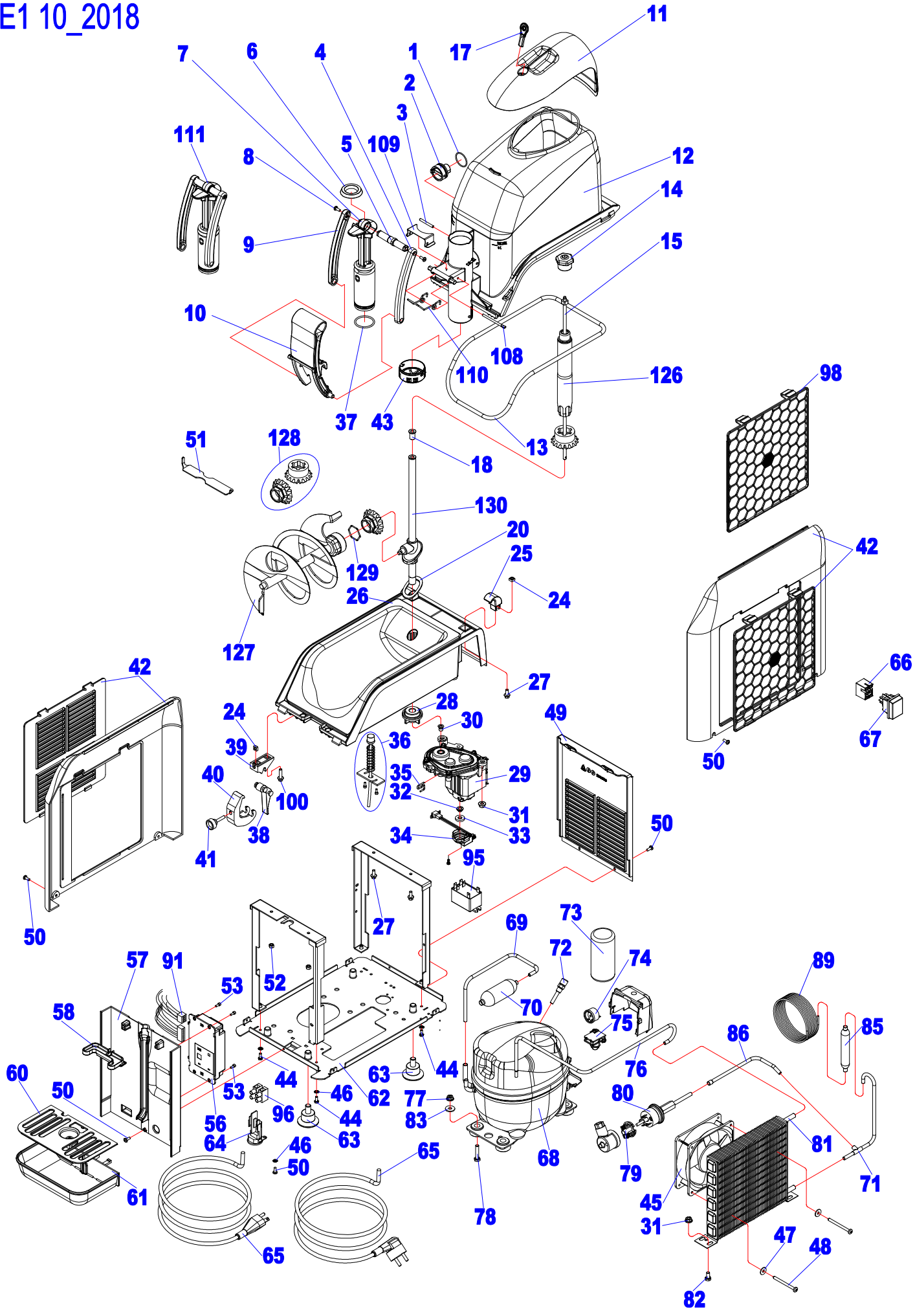
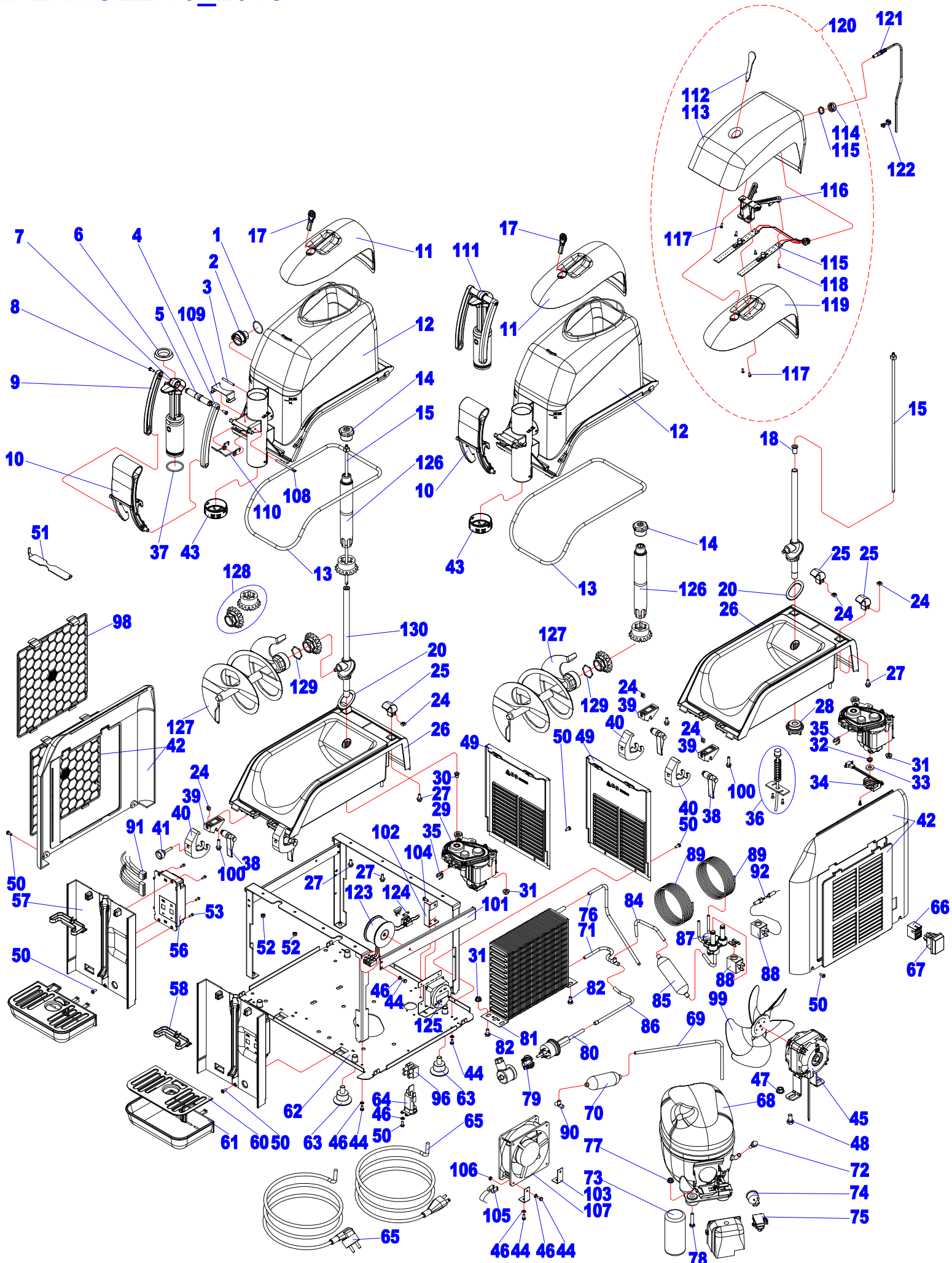


# B LARGE1 10\_2018



# B LARGE2 10\_2018



# BLarge: Listino Ricambi\Spare Part Price List 2018 Rev.06

BL

NOTA ! I prezzi in dollari sono dedicati al Mercato Americano  
NOTE ! The prices in Dollars are dedicated to the America Market

CODICE	ESP.	DESCRIZIONE	DESCRIPTION	FREON	BL1	BL2	BL2+	115/ 60	230/ 50	220/ 60	100/50- 60
B0004107-002	1	GUARNIZIONE TENUTA MANICOTTO OR2106	FOOD RED SYLICON SLEEVE HOLDING GASKET OR2106	ALL	*	*	*	*	*	*	*
B0004101-002	2	MANICOTTO QUICKREAM	QUICKREAM SLEEVE	ALL	*	*	*	*	*	*	*
B0000110-001	3	SPINA CILINDRICA 4X35MM INOX A2	STEEL CYLINDRICAL PLUG 4X35MM	ALL	*	*	*	*	*	*	*
B0003108-002	4	PONTE DESTRO LEVA NERO	BLACK RIGHT LEVER CONNECTION	ALL	*	*	*	*	*	*	*
B0003106-001	5	ASSE CONGIUNZIONE PONTI DELRIN+OTTO	CONNECTIONS JUNCTION AXIS	ALL	*	*	*	*	*	*	*
B0003111-001	6	GUARNIZIONE GOLA RUBINETTO SILICONE DE156	SILICON TAP RELIEF GASKET DE156	ALL	*	*	*	*	*	*	*
B0003109-003	7	PISTONE SCARICO COMPLETO QUICKREAM	QUICKREAM COMPLETE DRAIN PISTON	ALL	*	*	*	*	*	*	*
P0006105-001	8	VITE TC CROCE M4X10MM INOX	STEEL SCREW	ALL	*	*	*	*	*	*	*
B0003107-002	9	PONTE SINISTRO LEVA NERO	BLACK LEFT HANDLE BRIDGE	ALL	*	*	*	*	*	*	*
B0003120-001	10	ASSIEME LEVA CON SPINA B0003114	COMPLETE BLACK HANDLE WITH PIN	ALL	*	*	*	*	*	*	*
B0006109-002	11	CUPOLA CON SERRATURA	TRANSPARENT COVER WITH LOCK	ALL	*	*		*	*	*	*
B0000102-003	12	VASCA TRASPARENTE QUICKREAM COMPLETA DI MANICOTTO	QUICKREAM TRANSPARENT TANK WITH SLEEVE	ALL	*	*	*	*	*	*	*
L0000106-001	13	GUARNIZIONE VASCA BB/QK	TANK GASKET BB/QK	ALL	*	*	*	*	*	*	*
M0000107-001	14	GHIERA FISSAGGIO ELICA VERTICALE QK POM+INOX	QK VERTICAL BLADE FIXING RING	ALL	*	*	*	*	*	*	*
B0000106-001	15	ALBERO TRASMISSIONE CON DADO INOX	STEEL SHAFT WITH STEEL NUT	ALL	*	*	*	*	*	*	*
B0006113-001	17	CHIAVE SERRATURA CUPOLA	KEY FOR TRANSPARENT COVER WITH LOCK	ALL	*	*		*	*	*	*
M0000104-001	18	BOCCOLA CANOTTO TRASMISSIONE POM	TRANSMISSION SHAFT BUSHING	ALL	*	*	*	*	*	*	*
A0000114-001	20	GUARNIZIONE O-RING CANOTTO TRASMISSIONE VERSIONE 2012	TRANSMISSION SHAFT ORING 2012 VERSION	ALL	*	*	*	*	*	*	*
M0000120-001	24	DADO QUADRO M5 ZINCATO	M5 SQUARE NUT	ALL	*	*	*	*	*	*	*
M0006103-003	25	CERNIERA POSTERIORE NERO	BLACK REAR HINGE	ALL	*	*	*	*	*	*	*
L0002113-004	26	ASSIEME VASCA COMPLETA NERO NUOVA SERPENTINA RETTANGOLARE	BIG BIZ COMPLETE BLACK TANK NEW EVAPORATOR	ALL	*	*		*	*	*	*
M0001101-001	27	VITE TE FLANGIATA M5X12MM	SCREW TE 5X12MM	ALL	*	*	*	*	*	*	*
M0000105-001	28	GHIERA FISSAGGIO CANOTTO	RING NUT SHAFT FASTENING	ALL	*	*	*	*	*	*	*
M0005139-002	29	ASSIEME MOTORIDUTTORE CON CELLA DI HALL ELCO	COMPLETE GEAR MOTOR WITH HALL SENSOR ELCO	ALL	*	*	*	*	*	*	*
M0005139-003	29	ASSIEME MOTORIDUTTORE CON CELLA DI HALL KENTA	COMPLETE GEAR MOTOR WITH HALL SENSOR KENTA	ALL	*	*	*	*	*	*	*
A0000117-001	30	BOCCOLA CENTRAGGIO MOTORID./ALBERO	GEAR MOTOR BUSHING	ALL	*	*	*	*	*	*	*
DADOD.6ZFL	31	DADO M6 FLANGIATO	M6 NUT	ALL	*	*	*	*	*	*	*
B1071234	32	BUSSOLA TRASCINAMENTO MAGNETE	MAGNET SLEEVE	ALL	*	*	*	*	*	*	*
M1551004	33	MAGNETE PERMANENTE	PERMANENT MAGNET	ALL	*	*	*	*	*	*	*

# BLarge: Listino Ricambi\Spare Part Price List 2018 Rev.06

BL

NOTA ! I prezzi in dollari sono dedicati al Mercato Americano  
NOTE ! The prices in Dollars are dedicated to the America Market

CODICE	ESP.	DESCRIZIONE	DESCRIPTION	FREON	BL1	BL2	BL2+	115/ 60	230/ 50	220/ 60	100/50- 60
A0000123-002	34	KIT CONTENITORE COMPLETO DI SCHEDA CELLA HALL ELCO CON FILO	KIT COMPLETE PLASTIC COVER WITH HALL CELL ELCO	ALL	*	*	*	*	*	*	*
C025006	34	SCHEDA CELLA HALL KENTA	HALL CELL KENTA	ALL	*	*	*	*	*	*	*
A0001104-001	35	SPINA BLOCCAGGIO MOTOR./ALBERO TRASMISSIONE	GEAR MOTOR/TRANSMISSION SHAFT PIN	ALL	*	*	*	*	*	*	*
M0000157-002	36	ASSIEME SONDA TERMOSTATO ELETTRONICO FC-BB 2015	FC-BB ELECTRONIC THERMOSTAT PROBE COMPLETE 2015 VERS.	ALL	*	*	*	*	*	*	*
B0003112-002	37	GUARNIZIONE OR SILICONE PISTONE OR3118	PISTON SILICON GASKET OR 3118	ALL	*	*	*	*	*	*	*
M0006115-003	38	CERNIERA ANTERIORE NERO	BLACK FRONT HINGE	ALL	*	*	*	*	*	*	*
M0006116-003	39	BASE NERO	BLACK BASE	ALL	*	*	*	*	*	*	*
M0006102-003	40	GANCIO CERNIERA NERO	BLACK HINGE HOOK	ALL	*	*	*	*	*	*	*
M0006119-001	41	MANOPOLA FISSAGGIO GANCI M5X25mm	LOCKING BOLT	ALL	*	*	*	*			*
L0006131-001	42	KIT FIANCHI DX+SX+FILTRO ARIA+ALETTATURA NERO	KIT PLASTIC PANEL RIGHT+LEFT+AIR FILTER+LOUVER BLACK	ALL	*	*	*	*	*	*	*
L0006131-003	42	KIT FIANCHI DX+SX+FILTRO ARIA+ALETTATURA GIALLO	KIT PLASTIC PANEL RIGHT+LEFT+AIR FILTER+LOUVER YELLOW	ALL	*	*	*	*	*	*	*
L0006131-004	42	KIT FIANCHI DX+SX+FILTRO ARIA+ALETTATURA BLU	KIT PLASTIC PANEL RIGHT+LEFT+AIR FILTER+LOUVER BLUE	ALL	*	*	*	*	*	*	*
L0006131-005	42	KIT FIANCHI DX+SX+FILTRO ARIA+ALETTATURA BIANCO	KIT PLASTIC PANEL RIGHT+LEFT+AIR FILTER+LOUVER WHITE	ALL	*	*	*	*	*	*	*
B0003101-001	43	EROGATORE SOFT STELLA QUICKREAM	STAR SUPPLY VALVE	ALL	*	*	*	*	*	*	*
VTTE4X10Z	44	VITE TE 4X10 ZINCATA	SCREW TE 4X10MM	ALL	*	*	*	*	*	*	*
LA105101-001	45	MOTOVENTILATORE 17W 115V/50-60HZ	FAN MOTOR 17W 115V/50-60HZ	ALL	*			*			*
LD105106-001	45	MOTOVENTILATORE FP-108EXM-220 230V 50/60HZ	FAN MOTOR FP-108EXM-220 230V 50/60HZ	ALL	*				*	*	
AD005102-001	45	MOTOVENTILATORE 82CE-2010/77 230V/50-60HZ	FAN MOTOR 82CE-2010/77 230V/50-60HZ	ALL		*	*		*	*	
A5005101-001	45	MOTOVENTILATORE 82UL-2009/32 115V/60HZ	FAN MOTOR 82UL-2009/32 115V/60HZ	ALL		*	*	*			*
ROND.D.4.3EDENT	46	RONDELLA DENTELLATA D.4,3	INDENTED WASHER D.4,3	ALL	*	*	*	*	*	*	*
M0000123-001	47	RONDELLA PIANA 5X15	FLAT WASHER 5X15MM	ALL	*			*	*	*	*
DADOD.8ZFL	47	DADO M8 FLANGIATO	M8 NUT	ALL		*	*	*	*	*	*
VTTC4,8X60Z	48	VITE TC 4.8X50MM CROCE	SCREW TC 4.8X50MM	ALL	*			*	*	*	*
VTTE8X16Z	48	VITE TE 8X16MM	SCREW TE 8X16MM	ALL		*	*	*	*	*	*
L0106101-001	49	PANNELLO POSTERIORE ABS V0 NERO CON ALETTATURA	BACK PANEL BLACK PLASTIC WITH LOUVERS	ALL	*	*	*	*	*	*	*
M0006124-001	50	VITE TC 3.9X9.5MM CROCE	SCREW TC 3.9X9.5MM	ALL	*	*	*	*	*	*	*

# BLarge: Listino Ricambi Spare Part Price List 2018 Rev.06

BL

NOTA ! I prezzi in dollari sono dedicati al Mercato Americano  
NOTE ! The prices in Dollars are dedicated to the America Market

CODICE	ESP.	DESCRIZIONE	DESCRIPTION	FREON	BL1	BL2	BL2+	115/ 60	230/ 50	220/ 60	100/50- 60
B0003113-001	51	UTENSILE RIMOZIONE GUARNIZIONE B0003111-001 "DE156"	GASKET REMOVAL TOOL FOR B0003111-001 CODE	ALL	*	*	*	*	*	*	*
DADOD.5Z	52	DADO M5 ZINCATO	M5 NUT	ALL	*	*	*	*	*	*	*
M0000156-001	53	VITE TCEI M3X8MM	SCREW TCEI 3X8MM	ALL	*	*	*	*	*	*	*
L0005105-001	56	ELETTRONICA BB 230V STANDARD 2/5/8	ELECTRONIC BOARD 230V REV 01 STANDARD	ALL	*	*	*		*	*	
L0005105-003	56	ELETTRONICA BB 230V 2/8/30 + DISPLAY TEMPERATURA	ELECTRONIC BOARD 230V REV 04	ALL	*	*	*		*		
L0005102-001	56	ELETTRONICA COMPLETA 100-115V	ELECTRONIC BOARD 100-115V REV. 01	ALL	*	*	*	*			*
L0106102-002	57	PANNELLO FRONTALE ABS V0 NERO VERSIONE 2012	FRONT PANEL BLACK PLASTIC ABS 2012 VERSION	ALL	*	*	*	*	*	*	*
A0006115-001	58	CASSETTO RACCOLTA CONDENSA BB VERSIONE 2012	CONDENSATE DRIP TRAY	ALL	*	*	*	*	*	*	*
M0006117-001	60	GRIGLIA SGOCCIOLATOIO ABSV0 NERO	BLACK PLASTIC DRIP TRAY ABSV0	ALL	*	*	*	*	*	*	*
M0006110-004	61	SGOCCIOLATOIO CONDENSA NERO	BLACK DRIP TRAY	ALL	*	*	*	*	*	*	*
L0101109-001	62	STRUTTURA COMPLETA BIG BIZ 1	BIG BIZ 1 STRUCTURE	ALL	*			*	*	*	*
L0201108-001	62	STRUTTURA COMPLETA BIG BIZ 2	BIG BIZ 2 STRUCTURE	ALL		*	*	*	*	*	*
PAR114-ELGR	63	PIEDINO STANDARD	RUBBER FEET	ALL	*	*	*	*	*	*	*
M0005112-001	64	MORSETTIERA PA84/E	CONNECTION FOR SUPPLYING WIRING	ALL	*	*	*	*	*	*	*
CAVOAL.UL15ALAV	65	CAVO ALIMENTAZIONE USA 15A/125V 14AWG UL	POWER CORD 115 V U.L. FOR USA	ALL	*	*	*	*			
C013COD.1373	65	CAVO ALIMENTAZIONE SCHUKO 16A/230V 3x1,5mmq	SCHUKO POWER CORD	ALL	*	*	*		*	*	
ASS.CAVO-SPINA	65	CAVO ALIMENTAZIONE UK 13A/250VAC 3x1,5mmq	POWER CORD FOR UK	ALL	*	*	*		*		
AF005101-001	65	CAVO ALIMENTAZIONE JAPAN PSE 15A/125V	POWER CORD 100V PSE JAPAN	ALL	*	*	*	*			*
A0005106-001	66	BLOCCETTO X INTERRUTTORE SERIE 82	MOLEX CONNECTOR FOR MAIN SWITCH	ALL	*	*	*	*	*	*	*
I82L2206165	67	INTERRUTTORE GENERALE	MAIN SWITCH	ALL	*	*	*	*	*	*	*
L5102103-001	68	COMPRESSORE NEK2117GK 115V/60HZ-100V/50HZ	NEK2117GK 115V/60HZ-100V/50HZ COMPRESSOR	R404A	*			*			*
L2102101-001	68	COMPRESSORE EMT2117GK 220-240V/50HZ	EMT2117GK 220-240V/50HZ COMPRESSOR	R404A	*				*		
A5402101-001	68	COMPRESSORE NEK2125GK 115V/60HZ-100V/50HZ	NEK2125GK 115V/60HZ-100V/50HZ COMPRESSOR	R404A		*	*	*			*
A2402102-001	68	COMPRESSORE EMT2130GK 220-240/50HZ	EMT2130GK 220-240V/50HZ COMPRESSOR	R404A		*	*		*		
A3402101-001	68	COMPRESSORE NEK2134GK 208-230V/60HZ	NEK2134GK 208-230V/60HZ COMPRESSOR	R404A		*	*			*	
L0102106-001	69	TUBO RAME D.6 BOYLER-COMPRESSORE BB1	BB1 ACCUMULATOR-COMPRESSOR D.6 PLATE PIPE	ALL	*			*	*	*	*

# BLarge: Listino Ricambi\Spare Part Price List 2018 Rev.06

BL

NOTA ! I prezzi in dollari sono dedicati al Mercato Americano  
NOTE ! The prices in Dollars are dedicated to the America Market

CODICE	ESP.	DESCRIZIONE	DESCRIPTION	FREON	BL1	BL2	BL2+	115/ 60	230/ 50	220/ 60	100/50- 60
L0202102-001	69	TUBO RAME D.6 BOYLER-COMPRESSORE BB2	BB2 ACCUMULATOR-COMPRESSOR D.6 PLATE PIPE	ALL		*	*	*	*	*	*
M0102112-001	70	BOYLER	ACCUMULATOR	ALL	*	*	*	*	*	*	*
L0102112-001	71	ASSIEME TUBI RAME D.6MM CONDENSATORE-TEE-FILTRO BB1	KIT COPPER PIPE D.6MM CONDENSER-CUPPER TEE-FILTER BB1	ALL	*						*
L0102113-001	71	ASSIEME TUBI RAME D.6MM CONDENSATORE-TEE-TEE-FILTRO BB1	KIT COPPER PIPE D.6MM CONDENSER-CUPPER TEE-CUPPER TEE-FILTER BB1	ALL	*			*			
L0102106-001	71	TUBO RAME D.6MM CONDENSATORE-FILTRO BB1	BB1 ACCUMULATOR-COMPRESSOR D.6 PLATE PIPE	ALL	*				*	*	
L0202106-001	71	ASSIEME TUBI RAME D.6MM CONDENSATORE-TEE BB2	KIT COPPER PIPE D.6MM CONDENSER-CUPPER TEE BB2	ALL		*	*	*	*	*	*
A0002110-001	72	VALVOLA DI CARICA+TUBO RAME D.6MM 4CM BB1/2	CHARGE VALVE+ COPPER PIPE D.6MM 4CM BB1/2	ALL	*	*	*	*	*	*	*
L2105104-001	73	CONDENSATORE AVVIAMENTO COMPRESSORE EMT2117GK 220-240V/50HZ	START CAPACITOR EMT2117GK 220-240V/50HZ	R404A	*				*		
L5105106-001	73	CONDENSATORE AVVIAMENTO COMPRESSORE NEK2117GK 115V/60HZ-100V/50HZ	START CAPACITOR NEK2117GK 115V/60HZ-100V/50HZ	R404A	*			*			*
A3405103-001	73	CONDENSATORE AVVIAMENTO COMPRESSORE NEK2134GK 208-230V/60HZ	START CAPACITOR NEK2134GK 208-230V/60HZ	R404A		*	*			*	
A2405103-001	73	CONDENSATORE AVVIAMENTO COMPRESSORE EMT2130GK 220-240V/50HZ	START CAPACITOR EMT2130GK 220-240V/50HZ	R404A		*	*		*		
A5405103-001	73	CONDENSATORE AVVIAMENTO COMPRESSORE NEK2125GK 115V/60HZ-100V/50HZ	START CAPACITOR NEK2125GK 115V/60HZ-100V/50HZ	R404A		*	*	*			*
L2105102-001	74	PROTETTORE TERMICO COMPRESSORE EMT2117GK 220-240V/50HZ	THERMAL PROTECTOR EMT2117GK 220-240V/50HZ	R404A	*				*		
L5105104-001	74	PROTETTORE TERMICO COMPRESSORE NEK2117GK 115V/60HZ-100V/50HZ	THERMAL PROTECTOR NEK2117GK 115V/60HZ-100V/50HZ	R404A	*			*			*
A3405101-001	74	PROTETTORE TERMICO COMPRESSORE NEK2134GK 208-230V/60HZ	THERMAL PROTECTOR NEK2134GK 208-230V/60HZ	R404A		*	*			*	
A2405102-001	74	PROTETTORE TERMICO COMPRESSORE EMT2130GK 220-240V/50HZ	THERMAL PROTECTOR EMT2130GK 220-240V/50HZ	R404A		*	*		*		
A5405101-001	74	PROTETTORE TERMICO COMPRESSORE NEK2125GK 115V/60HZ-100V/50HZ	THERMAL PROTECTOR NEK2125GK 115V/60HZ-100V/50HZ	R404A		*	*	*			*
L2105103-001	75	RELE' COMPRESSORE EMT2117GK 220-240V/50HZ	RELAY EMT2117GK 220-240V/50HZ	R404A	*				*		
L5105105-001	75	RELE' COMPRESSORE NEK2117GK 115V/60HZ-100V/50HZ	RELAY NEK2117GK 115V/60HZ-100V/50HZ	R404A	*			*			*

# BLarge: Listino Ricambi Spare Part Price List 2018 Rev.06

BL

NOTA ! I prezzi in dollari sono dedicati al Mercato Americano  
NOTE ! The prices in Dollars are dedicated to the America Market

CODICE	ESP.	DESCRIZIONE	DESCRIPTION	FREON	BL1	BL2	BL2+	115/ 60	230/ 50	220/ 60	100/50- 60
A3405102-001	75	RELE' COMPRESSORE NEK2134GK 208-230V/60HZ	RELAY NEK2134GK 208-230V/60HZ	R404A		*	*			*	
A2405101-001	75	RELE' COMPRESSORE EMT2130GK 220-240V/50HZ	RELAY EMT2130GK 220-240V/50HZ	R404A		*	*		*		
A5405102-001	75	RELE' COMPRESSORE NEK2125GK 115V/60HZ-100V/50HZ	RELAY NEK2125GK 115V/60HZ-100V/50HZ	R404A		*	*	*			*
L0102101-001	76	TUBO RAME D.6MM CONDENSATORE-COMPRESSORE BB1	BB1 CONDENSER COPPER PIPE D.6MM-COMPRESSOR	ALL	*				*	*	
L0202103-001	76	TUBO RAME D.6MM CONDENSATORE-COMPRESSORE BB2	BB2 CONDENSER COPPER PIPE D.6MM-COMPRESSOR	ALL		*	*	*	*	*	*
L0102110-001	76	TUBO RAME D.6MM CONDENSATORE-COMPRESSORE BB1	BB1 CONDENSER COPPER PIPE D.6MM-COMPRESSOR	ALL	*			*			*
DADOD.6ZFL	77	DADO M6 FLANGIATO	M6 NUT	ALL	*				*		
DADOD.8ZFLAUT	77	DADO M8 FLANGIATO	M8 NUT	ALL	*	*	*	*	*	*	*
VTTE6X30	78	VITE TE M6X30MM	SCREW M6X30MM	ALL	*				*		
VTTE8X35Z	78	VITE TE M8X35MM	SCREW M8X35MM	ALL	*	*	*	*	*	*	*
A0005110-001	79	MORSETTIERA PRESSOSTATO 02303611001	PRESSURE SWITCH CONNECTION WIRES	ALL	*	*	*	*	*	*	*
A0002101-001	80	PRESSOSTATO R404A	R404A PRESSURE SWITCH	R404A	*	*	*	*	*	*	*
P0202101-001	81	CONDENSATORE ARIA FERRO STFT 12118 BB1	BB1 IRON AIR CONDENSER STFT12118	ALL	*			*	*	*	*
L0002103-001	81	CONDENSATORE ARIA FERRO STFT12218 BB2	BB2 IRON AIR CONDENSER STFT12218	ALL		*	*	*	*	*	*
VTTE6X12Z	82	VITE TE M6X12MM	SCREW TE 6X12MM	ALL	*	*	*	*	*	*	*
RONDELLA6X24PIA	83	RONDELLA PIANA 6X18	FLAT WASHER 6X18MM	ALL	*				*		
L0202107-001	84	TUBO RAME D.6MM TEE-FILTRO	COPPER PIPE D.6MM TEE-DRYER	ALL		*	*		*	*	*
L0202108-001	84	ASSIEME TUBI RAME D.6MM TEE-TEE-FILTRO BB2	KIT COPPER PIPE D.6MM CUPPER TEE-CUPPER TEE-FILTER BB2	ALL		*	*	*			
L0102108-001	85	FILTRO ESSICCATORE BB1	BB1 DRYER	ALL	*			*	*	*	*
A0002113-001	85	FILTRO ESSICCATORE BB2	BB2 DRYER	ALL		*	*	*	*	*	*
L0102103-001	86	TUBO RAME D.6MM TEE-PRESSOSTATO	COPPER PIPE D.6MM TEE-PRESSURE SWITCH	ALL	*			*			*
L0102103-001	86	TUBO RAME D.6MM TEE-PRESSOSTATO	COPPER PIPE D.6MM TEE-PRESSURE SWITCH	ALL		*	*	*	*	*	*
A0202102-001	87	BLOCCHETTO VALVOLE 2 VIE NC DN1,2 8461-R OLAB	OLAB 2 WAY BODY VALVE NC DN1,2 8461-R	ALL		*	*	*	*	*	*
A0202101-001	87	BLOCCHETTO 2VIE NC CEME	CEME 2 WAY BODY VALVE NC	ALL		*	*	*	*	*	*
AA605101-001	88	BOBINA 5C R04/RP1 100-120/50-60HZ UR CEME	CEME COIL 5C R04/RP1 100-120/50-60HZ UR	ALL		*	*	*			*
AD605101-001	88	BOBINA 5C R1T/RP1 208-240V/50-60HZ UR CEME	CEME COIL 5C R1T/RP1 208-240V/50-60HZ UR	ALL		*	*		*	*	
AF005102-001	88	BOBINA 100/50-60 CE 6000BH/E1FN OLAB	OLAB COIL 100/50-60 CE 6000BH/E1FN OLAB	ALL		*	*				*
AA005102-001	88	BOBINA 120/50-60 UL 11000BH/G6IU-2 OLAB	OLAB COIL 120/50-60 UL 11000BH/G6IU-2 OLAB	ALL		*	*	*			
AD005103-001	88	BOBINA 230/50-60 CE 6000BH/K5FN OLAB	OLAB COIL 230/50-60 CE 6000BH/K5FN OLAB	ALL		*	*		*	*	

# BLarge: Listino Ricambi Spare Part Price List 2018 Rev.06

BL

NOTA ! I prezzi in dollari sono dedicati al Mercato Americano  
NOTE ! The prices in Dollars are dedicated to the America Market

CODICE	ESP.	DESCRIZIONE	DESCRIPTION	FREON	BL1	BL2	BL2+	115/ 60	230/ 50	220/ 60	100/50- 60
P0002110-001	89	CAPILLARE 0,91MMX3700MM BB1	BB1 0,91MMX3700MM CAPILLARY	ALL	*			*	*	*	*
A0002109-001	89	CAPILLARE 0,91MMX5000MM BB2	BB2 0,91MMX5000MM CAPILLARY	ALL		*	*	*	*	*	*
TEEDIRAMED6	90	TEE RAME D.6	D.6 CUPPER TEE	ALL		*	*	*	*	*	*
L0105101-001	91	IMPIANTO ELETTRICO BIG BIZ 1	BIG BIZ 1 ELECTRIC INSTALLATION	ALL	*			*	*	*	*
L0105103-001	91	IMPIANTO ELETTRICO BIG BIZ 1 VERSIONE SENZA RELE POTENZA E PRESSOSTATO	BIG BIZ 1 ELECTRIC INSTALLATION	ALL	*				*	*	
L0205101-001	91	IMPIANTO ELETTRICO BIG BIZ 2	BIG BIZ 2 ELECTRIC INSTALLATION	ALL		*	*	*	*	*	*
A0005103-001	92	FUSIBILE f 5X20MM 315mA RAPIDO	FAST FUSE 315MA 5X20	ALL	*	*	*	*	*	*	*
AA005101-001	95	RELE DI POTENZA 120V 668281100300	POWER RELAY 120V 668281100300	ALL	*			*			*
M0005151-001	96	MORSETTIERA CAVO ALIMENTAZIONE	POWER CORD SCREW TERMINAL BOARD	ALL	*	*	*	*			*
A0006113-001	98	FILTRO ARIA NERO	BLACK PLASTIC AIR FILTER	ALL	*	*	*	*	*	*	*
A0006113-003	98	FILTRO ARIA GIALLO	YELLOW PLASTIC AIR FILTER	ALL	*	*	*	*	*	*	*
A0006113-004	98	FILTRO ARIA BLU	BLUE PLASTIC AIR FILTER	ALL	*	*	*	*	*	*	*
A0006113-005	98	FILTRO ARIA BIANCO	WHITE PLASTIC AIR FILTER	ALL	*	*	*	*	*	*	*
V4012201M3WBM	99	VENTOLA ALLUMINIO 200/34°	ALUMINUM FAN BLADE 200/34°	ALL		*	*	*	*	*	*
A0000115-001	100	VITE TE FLANGIATA M5X20MM	SCREW TE M5X20MM	ALL	*	*	*	*	*	*	*
L0001104-001	101	STAFFA RINFORZO STRUTTURA BB2	SUPPORT BRACKET BB2 STRUCTURE	ALL		*	*				*
L0201109-001	102	STAFFA FISSAGGIO BLOCCHETTO VALVOLA BB2	FIXING BRACKET BODY VALVE BB2	ALL		*	*				*
L0201110-001	103	STAFFA FISSAGGIO MOTOVENTOLA AGGIUNTIVA BB2	FIXING BRACKET FAN MOTOR BB2	ALL		*	*				*
VTTE4X10Z	104	VITE BLOCCAGGIO STAFFA CON BLOCCHETTO VALVOLA OLAB	SCREW LOCK BRACKET	ALL		*	*				*
L0205103-001	105	KIT IMPIANTO MOTOVENTOLA AGGIUNTIVA BB2	KIT WIRING PER FAN MOTOR BB2	ALL		*	*				*
DADOD.4Z	106	DADO M4 ZINCATO	M4 NUT	ALL		*	*				*
LA105101-001	107	MOTOVENTILATORE AGGIUNTO 17W 115V/50-60HZ	SECOND FAN MOTOR 17W 115V/50-60HZ	ALL		*	*				*
B0003115-001	108	SPINA BLOCCAGGIO MOLLA	SPRING LOCKING PIN	ALL	*	*	*	*	*	*	*
B0003119-001	109	STAFFA RIDUZIONE APERTURA RUBINETTO	OPENING TAP REDUCTION BRACKET	ALL	*	*	*	*	*	*	*
B0003118-001	110	MOLLA CHIUSURA RUBINETTO	TAP CLOSING SPRING BRACKET	ALL	*	*	*	*	*	*	*
B0003110-002	111	ASSIEME RUBINETTO	COMPLETE TAP	ALL	*	*	*	*	*	*	*
B0006113-002	112	CHIAVE SERRATURA CUPOLA BL+ INOX	BL+ STAINLESS STEEL KEY LOCK	ALL			*	*	*	*	*
A0006132-001	113	CUPOLA NERA PER LED BL+	BL+ BLACK TOP LIGHT LID	ALL			*	*	*	*	*
A0006132-003	113	CUPOLA GIALLA PER LED BL+	BL+ YELLOW TOP LIGHT LID	ALL			*	*	*	*	*
A0006133-001	114	GHIERA NERA PORTADADO PER LED BL+	BLACK RING FOR NUT	ALL			*	*	*	*	*
AE005101-001	115	LAMPADA 18 LED 12VAC BLARGE+ CON DADO	LED LAMP WITH NUT	ALL			*	*	*	*	*
A0005118-001	116	SUPPORTO LED/CUPOLA NERO BL+	BLACK FASTENING SUPPORT FOR LED LAMP	ALL			*	*	*	*	*



# BLarge: Listino Ricambi Spare Part Price List 2018 Rev.06

NOTA ! I prezzi in dollari sono dedicati al Mercato Americano  
NOTE ! The prices in Dollars are dedicated to the America Market

BL

CODICE	ESP.	DESCRIZIONE	DESCRIPTION	FREON	BL1	BL2	BL2+	115/ 60	230/ 50	220/ 60	100/50- 60
A0000126-001	117	VITE TC+ M3X8 INOX A2 UNI7687	STAINLESS STEEL SCREW M3X8	ALL			*	*	*	*	*
VTTC2.9X9.5CR	118	VITE TC 2.9X9.5MM CROCE	SCREW TC 2.9X9.5	ALL			*	*	*	*	*
A0006134-001	119	SOTTOCUPOLA BL+ CON SERRATURA TRAS.	LAMP SUPPORTING BASE	ALL			*	*	*	*	*
AE006101-001	120	ASS. CUPOLA BL+ NERA STANDARD	COMPLETE BLACK TOP LIGHT LID BL+	ALL			*	*	*	*	*
AE006101-003	120	ASS. CUPOLA BL+ GIALLA STANDARD	COMPLETE YELLOW TOP LIGHT LID BL+	ALL			*	*	*	*	*
AE006101-006	120	ASS. CUPOLA BL+ YELLOW SLUSH PUPPIE	COMPLETE SLUSH PUPPIE TOP LIGHT LID BL+	ALL			*	*	*	*	*
AE005102-001	121	CAVO CUPOLA BL+	TOP LIGHT WIRE W/PLUG	ALL			*	*	*	*	*
A0000124-001	122	BLOCCACAVO SR 2L-1 NERO	BLACK CABLE CLAMP	ALL			*	*	*	*	*
A0005117-001	123	TRASFORMATORE 115/230 20VA	TRANSFORMER 115/230V 20VA	ALL			*	*	*	*	*
F11583	124	FUSIBILE RITARDATO 5X20 MM 2A	DELAYED FUSE 2A 5X20	ALL			*	*	*	*	*
T027600231	125	TIMER 18842054 110V 50/60HZ	TIMER 110V 50/60HZ	ALL		*	*	*			*
T027600191	125	TIMER 18842015 220-240V 50/60HZ	TIMER 220-240V 50/60HZ	ALL		*	*		*	*	
B0004113-001	126	ELICA VERTICALE QK + BOCCOLA INOX 2015 per coppia conica B0004114-007 da S/N 180904475	QUICKREAM VERTICAL AUGER + INOX BUSHING 2015 for bevel gear B0004114-007 from S/N 180904475	ALL	*	*	*	*	*	*	*
B0004102-003	127	ELICA ORIZZIONALE QK V.2017 FG500PNC010 per coppia conica B0004114-007 da S/N 180904475	QK HORIZONTAL AUGER V.2017 for bevel gear B0004114-007 from S/N 180904475	ALL	*	*	*	*	*	*	*
B0004114-007	128	COPPIA CONICA US PA6FV+POM-C ESAG. da S/N 180904475	BEVEL GEAR US PA6FV+POM-C HEX from S/N 180904475	ALL	*	*	*	*	*	*	*
B0004116-001	129	GUARN.OR2093 SIL.ROS. ALIM. INGRAN. da S/N 180904475	FOOD RED SYLICON GASKET OR2093 H.GEAR from S/N 180904475	ALL	*	*	*	*	*	*	*
B0000103-004	130	CANOTTO QK V.2017 O-RING +BOCCOLA da S/N 180904475	QK TRANSMISSION SHAFT WITH BUSHING 2017 VERS. from S/N 180904475	ALL	*	*	*	*	*	*	*
D0106101-001		IMBALLO BSMART 1 / BLARGE 1	BSMART 1 / BLARGE 1 Box	ALL	*			*	*	*	*
D0206101-001		IMBALLO BLARGE 2	BLARGE 2 box	ALL		*	*	*	*	*	*