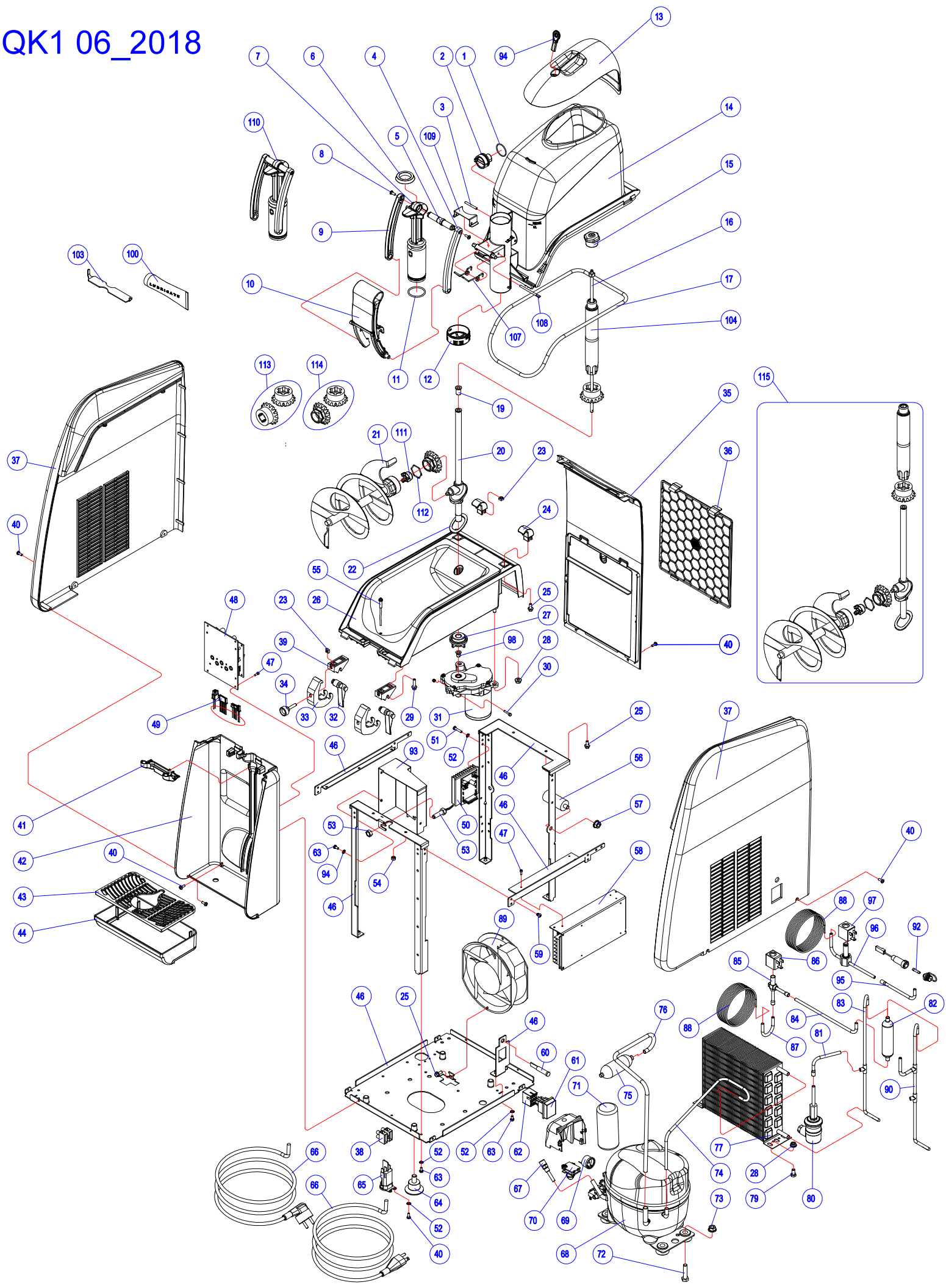


QK1 06_2018



QUICKREAM: Listino Ricambi\Spare Part Price List 2018 Rev.06

QK		NOTA ! I prezzi in dollari sono dedicati al Mercato Americano NOTE ! The prices in Dollars are dedicated to the America Market						
CODICE	ESP.	DESCRIZIONE	DESCRIPTION	QK1	115/60	230/50	220/60	100/50-60
B0004107-002	1	GUARNIZIONE TENUTA MANICOTTO OR2106	FOOD RED SYLICON SLEEVE HOLDING GASKET OR2106	*	*	*	*	*
B0004101-002	2	MANICOTTO QUICKREAM	QUICKREAM SLEEVE	*	*	*	*	*
B0000110-001	3	SPINA CILINDRICA 4X35MM INOX A2	STEEL CYLINDRICAL PLUG 4X35MM	*	*	*	*	*
B0003108-002	4	PONTE DESTRO LEVA	RIGHT LEVER CONNECTION	*	*	*	*	*
B0003106-001	5	ASSE CONGIUNZIONE PONTI DELRIN+OTTO	CONNECTIONS JUNCTION AXISIS	*	*	*	*	*
B0003111-001	6	GUARNIZIONE GOLA RUBINETTO SILICONE DE156	SILICON TAP RELIEF GASKET DE156	*	*	*	*	*
B0003109-003	7	PISTONE SCARICO COMPLETO QUICKREAM	QUICKREAM COMPLETE DRAIN PISTON	*	*	*	*	*
P0006105-001	8	VITE TC CROCE M4X10MM INOX	STEEL SCREW	*	*	*	*	*
B0003107-002	9	PONTE SINISTRO LEVA	LEFT HANDLE BRIDGE	*	*	*	*	*
B0003120-001	10	ASSIEME LEVA CON SPINA B0003114	COMPLETE BLACK HANDLE WITH PIN	*	*	*	*	*
B0003112-002	11	GUARNIZIONE OR SILICONE PISTONE OR3118	PISTON SILICON GASKET OR 3118	*	*	*	*	*
B0003101-001	12	EROGATORE SOFT STELLA QUICKREAM	STAR SUPPLY VALVE	*	*	*	*	*
B0006109-002	13	CUPOLA CON SERRATURA	TRANSPARENT COVER WITH LOCK	*	*	*	*	*
B0000102-003	14	VASCA TRASPARENTE QUICKREAM COMPLETA DI MANICOTTO B0004101-002	QUICKREAM TRANSPARENT TANK WITH SLEEVE B0004101-002	*	*	*	*	*
M0000107-001	15	GHIERA FISSAGGIO ELICA VERTICALE QK POM+INOX	QK VERTICAL BLADE FIXING RING	*	*	*	*	*
B0000106-001	16	ALBERO TRASMISSIONE CON DADO INOX	STEEL SHAFT WITH STEEL NUT	*	*	*	*	*
L0000106-001	17	GUARNIZIONE VASCA BB/QK	TANK GASKET BB/QK	*	*	*	*	*
M0000104-001	19	BOCCOLA CANOTTO TRASMISSIONE POM	TRANSMISSION SHAFT BUSHING	*	*	*	*	*
B0000103-004	20	CANOTTO TRASMISSIONE QK CON BOCCOLA VERSIONE 2017 per sistema B0100102-002	QUICKREAM TRANSMISSION SHAFT WITH BUSHING 2017 VERS. For system B0100102-002	*	*	*	*	*
B0004102-003	21	ELICA ORIZZONTALE QK COMPLETA DI BOCCOLA VERSIONE 2017	QUICKREAM HORIZONTAL AUGER COMPLETE OF BUSHING 2017 VERS.	*	*	*	*	*
A0000114-001	22	GUARNIZIONE O-RING CANOTTO TRASMISSIONE VERSIONE 2012	TRANSMISSION SHAFT GASKET	*	*	*	*	*
M0000120-001	23	DADO QUADRO D5 FERRO ZN UNI 5597	D5 SQUARE NUT	*	*	*	*	*
M0006103-003	24	CERNIERA POSTERIORE NERO	BLACK REAR HINGE	*	*	*	*	*
M0001101-001	25	VITE TE FLANGIATA 5X12 ZINCATA	TE GALVANIZED SCREW 5X12	*	*	*	*	*
B0002101-002	26	ASSIEME VASCA QUICKREAM NERO NUOVA SERPENTINA RETTANGOLARE A PARTIRE DALLA MATRICOLA 131002754	QUICKREAM COMPLETE BLACK TANK NEW EVAPORATOR FROM S/N 131002754	*	*	*	*	*
M0000105-001	27	GHIERA FISSAGGIO CANOTTO POM+OTTONE	SHAFT FIXING RING	*	*	*	*	*
DADOD.6ZFL	28	DADO M6 FLANGIATO	M6 NUT	*	*	*	*	*
A0000115-001	29	VITE TE FLANGIATA M5X20MM	SCREW TE M5X20MM	*	*	*	*	*
B0000117-001	30	ASSIEME VITE+DADO M3 BRUSHLESS/TRASMISSIONE QK	KIT SCREW+NUT M3 BRUSHLESS/TRANSMISSION QK	*	*	*	*	*
B0005102-001	31	MOTORIDUTTORE BRUSHLESS	BRUSHLESS GEARMOTOR 24VDC	*	*	*	*	*
M0006115-003	32	CERNIERA ANTERIORE NERO	BLACK FRONT HINGE	*	*	*	*	*
M0006102-003	33	GANCIO CERNIERA NERO	BLACK HINGE HOOK	*	*	*	*	*
M0006119-001	34	MANOPOLA FISSAGGIO GANCI M5X25mm	SPLINED KNOB	*	*	*	*	*
B0006106-001	35	PANNELLO POSTERIORE QK GRIGIO	BACK GREY PANEL QK	*	*	*	*	*
A0006113-006	36	INSERTO FILTRO FIANC. NEW BB/QK GRIGIO	GREY AIR FILTER	*	*	*	*	*
B0006110-001	37	KIT FIANCHI DX-SX-RACC. QK BIANCO	KIT PLASTIC WHITE PANEL RIGHT LEFT	*	*	*	*	*
B0006110-002	37	KIT FIANCHI DX-SX-RACC. QK NERO	KIT PLASTIC BLACK PANEL RIGHT LEFT	*	*	*	*	*
M0005151-001	38	MORSETTIERA CAVO ALIMENTAZIONE	POWER CORD SCREW TERMINAL BOARD	*	*	*	*	*
M0006116-003	39	BASE NERO	BLACK BASE	*	*	*	*	*
M0006124-001	40	VITE TC CROCE AUT 3.9X9.5 NICHELATA	SCREW TC 3.9X9.5MM	*	*	*	*	*
B0006111-001	41	CASSETTO RACCOLTA COND. QK GRIGIO	TRAY CONDENSATE	*	*	*	*	*
B0006105-001	42	PANNELLO FRONTALE QK GRIGIO	FRONT PANEL GREY QK	*	*	*	*	*
B0006108-001	43	GRIGLIA SGOCCIOLATOIO QK GRIGIO	GREY PLASTIC DRIP TRAY	*	*	*	*	*
B0006107-001	44	SGOCCIOLATOIO CONDENSA QK BIANCO	WHITE DRIP TRAY	*	*	*	*	*
B0006107-002	44	SGOCCIOLATOIO CONDENSA QK NERO	BLACK DRIP TRAY	*	*	*	*	*
B0101101-001	46	STRUTTURA COMPLETA QUICKREAM 1	QUICKREAM STRUCTURE	*	*	*	*	*
M0000156-001	47	VITE TCEI M3X8 ZINCATA	SCREW TCEI 3X8MM	*	*	*	*	*
B0005130-001	48	ELETRONICA QUICKREAM VELOCITA' VARIABILE	QUICKREAM ELECTRONIC BOARD VARIABLE SPEED	*	*	*	*	*

QUICKREAM: Listino Ricambi\Spare Part Price List 2018 Rev.06

QK		NOTA ! I prezzi in dollari sono dedicati al Mercato Americano NOTE ! The prices in Dollars are dedicated to the America Market						
CODICE	ESP.	DESCRIZIONE	DESCRIPTION	QK1	115/60	230/50	220/60	100/50-60
B0105101-001	49	IMPIANTO ELETTRICO QUICKREAM1	QUICKREAM ELECTRIC INSTALLATION	*	*	*	*	*
B0005104-003	50	ELETRONICA DRIVER BRUSHLESS COMPLETA VELOCITA' VARIABILE+CONTROLLO AMPEROMETRICO	ELETRONIC DRIVER BRUSHLESS COMPLETE VARIABLE SPEED+AMPERE CONTROL	*	*	*	*	*
VTTC4X16Z	51	VITE TC-4X16/TC+4X20 ZINCATA	SCREW TC 4X16	*	*	*	*	*
ROND.D.4.3EDENT	52	RONDELLA DENTELLATA 4.3 E ZINCATA	INDENTED WASHER D.4,3	*	*	*	*	*
B0005105-001	53	SENSOR REED MEDER MK11/M8-BV14649	SENSOR REED MEDER MK11/M8-BV14649	*	*	*	*	*
DADOD.5Z	54	DADO DIAM.5 MM 5588 ZINCATO	M5 NUT	*	*	*	*	*
B0005101-001	55	TERMOSTATO ELETTR.PT1000 QUICKREAM	ELECTRONIC THERMOSTAT PROBE COMPLETE	*	*	*	*	*
FFLC560501	56	FILTRO ANTIDISTURBO	SUPPRESSOR FILTER	*	*	*	*	*
DADOD.8ZFL	57	DADO M8 FLANGIATO	M8 NUT	*	*	*	*	*
B0005106-001	58	ALIMENTATORE SWITCHING 100-240/24 RS-150-24	SWITCHING POWER SUPPLY 100-240/24 RS-150-24	*	*	*	*	*
B0105104-001	58	ASSIEME ALIMENTATORE SWITCHING 100-240/24 RPS 160-24	SWITCHING POWER SUPPLY KIT 100-240/24 RPS 160-24	*	*	*	*	*
A0001102-001	59	RIVETTO 4X8 MM ACCIAIO	RIVET 4X8	*	*	*	*	*
A0005105-001	60	SEGNALATORE LUM110V SX28H1L3G00059	COMPRESSOR WARNING LIGHT 110V	*	*	*	*	*
A0005104-001	60	SEGNALATORE LUM230V SX28H1E2G00000	COMPRESSOR WARNING LIGHT 230V	*	*	*	*	*
I82L2206165	61	INT. GENERALE 0/1 SX82C1881E210000	MAIN SWITCH	*	*	*	*	*
A0005106-001	62	BLOCCETTO X INTERRUPTORE SERIE 8Z	MOLEX CONNECTOR FOR MAIN SWITCH	*	*	*	*	*
VTTE4X10Z	63	VITE TE 4X10 ZINCATA	SCREW 4X10	*	*	*	*	*
PAR114-ELGR	64	PIEDINO VENTOSA M10X17 25 PRVN40M1017	RUBBER FEET	*	*	*	*	*
M0005112-001	65	MORSETTIERA X CAVO PA84/E 00500011	CONNECTION FOR SUPPLYING WIRING	*	*	*	*	*
CAVOAL.UL15ALAV	66	CAVO ALIMENTAZIONE UL 14AWG15A125V	POWER CORD 115 V U.L.	*	*	*	*	*
C013COD.1373	66	CAVO ALIMENTAZIONE 3X1.5X2100 MM	SCHUKO POWER CORD	*	*	*	*	*
AF005101-001	66	CAVO ALIMENTAZIONE JAPAN 15A 125V PSE	JAPAN POWER CORD PSE	*	*	*	*	*
A3005101-001	66	CAVO ALIMENTAZIONE 3X1.5X2100 MM KSC8305 KOREA	KOREA SCHUKO POWER CORD KSC8305	*	*	*	*	*
A0002110-001	67	VALVOLA DI CARICA+TUBO RAME 4CM	CHARGE VALVE+ COPPER PIPE D.6MM 4CM	*	*	*	*	*
A5402101-001	68	COMPRESSORE NEK2125GK 115V/60HZ-100V/50HZ	NEK2125GK 115V/60HZ COMPRESSOR	*	*	*	*	*
A2402102-001	68	COMPRESSORE EMT2130GK 220-240V/50HZ	EMT2130GK 220-240V/50HZ COMPRESSOR	*	*	*	*	*
A3402101-001	68	COMPRESSORE NEK2134GK 208-230V/60HZ	NEK2134GK 208-230V/60HZ COMPRESSOR	*	*	*	*	*
A5405101-001	69	PROTETTORE TERMICO COMPRESSORE NEK2125GK 115V/60HZ-100V/50HZ	THERMAL PROTECTOR NEK2125GK 115V/60HZ-100V/50HZ	*	*	*	*	*
A2405102-001	69	PROTETTORE TERMICO COMPRESSORE EMT2130GK 220-240V/50HZ	THERMAL PROTECTOR EMT2130GK 220-240V/50HZ	*	*	*	*	*
A2405101-001	70	RELE' COMPRESSORE EMT2130GK 220-240V/50HZ	RELAY EMT2130GK 220-240V/50HZ	*	*	*	*	*
A5405103-001	71	CONDENSATORE AVVIAMENTO COMPRESSORE NEK2125GK 115V/60HZ-100V/50HZ	START CAPACITOR NEK2125GK 115V/60HZ-100V/50HZ	*	*	*	*	*
A2405103-001	71	CONDENSATORE AVVIAMENTO COMPRESSORE EMT2130GK 220-240V/50HZ	START CAPACITOR EMT2130GK 220-240V/50HZ	*	*	*	*	*
VTTE6X30	72	VITE TE M6X30MM	SCREW M6X30MM	*	*	*	*	*
VTTE8X35Z	72	VITE TE 8X35 ZINCATA	SCREW M8X35MM	*	*	*	*	*
DADOD.8ZFLAUT	73	DADO FLANGIATO AUTOFRENANTE D.8 ZINC. DIN6927	NUT M8	*	*	*	*	*
DADOD.6ZFL	73	DADO M6 FLANGIATO	M6 NUT	*	*	*	*	*
B0102103-001	74	TUBO D6 COMPRESSORE-CONDENSATORE QK1 D.6X4,5	CUPPER PIPE COMPRESSOR-CONDENSATOR QK1 D.6X4,5	*	*	*	*	*
B0102112-001	74	TUBO CU D.6RAS COMPR-COND EMT2130GK	CUPPER PIPE COMPRESSOR EMT2130GK-CONDENSATOR QK1 D.6RAS	*	*	*	*	*
M0102112-001	75	BOYLER FIRST CLASS 1 D.30X97MM	ACCUMULATOR FC1 QK	*	*	*	*	*
B0102110-001	76	TUBO CU BOYLER2-COMPRESSORE QK1 D8X1A PARTIRE DALLA MATRICOLA 131002754	CUPPER PIPE ACCUMULATOR-COMPRESSOR QK1 D8X1 FROM S/N 131002754	*	*	*	*	*
B0102114-001	76	TUBO CU BOYLER2-COMPR.EMT2130GK D.6	CUPPER PIPE ACCUMULATOR-COMPR.EMT2130GK D.6	*	*	*	*	*
L0002103-001	77	CONDENSATORE BB2 STFT12218	ALLUMINIUM-COPPER STFT12218 CONDENSER	*	*	*	*	*
VTTE6X12Z	79	VITE TE 6X12 ZINCATA	SCREW 6X12	*	*	*	*	*
A0002101-001	80	PRESSOSTATO G63P5081600 T98-117	PRESSURE SWITCH	*	*	*	*	*
B0102107-001	81	TUBO CU TEE-PRESSOSTATO QK1 D6X4,5	CUPPER PIPE TEE-PRESSOSTAT	*	*	*	*	*

QUICKREAM: Listino Ricambi\Spare Part Price List 2018 Rev.06

QK		NOTA ! I prezzi in dollari sono dedicati al Mercato Americano NOTE ! The prices in Dollars are dedicated to the America Market						
CODICE	ESP.	DESCRIZIONE	DESCRIPTION	QK1	115/60	230/50	220/60	100/50-60
A0002113-001	82	FILTRO CU GR20 IN/OUT 6.2 ARRESTO	DRYER	*	*	*	*	*
B0102104-001	83	ASSIEME TUBI CONDENSATORE+TEE+FILTRO QK1	KIT COPPER PIPE CONDENSER-CUPPER TEE FILTER	*	*	*	*	*
B0102105-001	84	TUBO CU FILTRO RAME-CEME QK1 D6X4,5	COPPER PIPE QK1 D6X4,5	*	*	*	*	*
A0102101-001	85	CORPO VALVOLA 1VIA NC5925TE2,0D CEME	CEME BODY VALVE	*	*	*	*	*
AA605101-001	86	BOBINA 5C 100-120/50-60 UL R04/RP1 CEME	CEME COIL 5C 100-120/50-60 UL R04/RP1	*	*			*
AD605101-001	86	BOBINA 5C 208-240/50-60 UL R1T/RP1 CEME	CEME COIL 5C 208-240/50-60 UL R1T/RP1	*	*	*	*	*
M0102120-001	87	TUBO CU CEME-CAPILLARE FC1 D6X4,5	COPPER PIPE QK1 D6X4,5	*	*	*	*	*
A0002117-001	88	CAPILLARE 0,91MX1,70MT A PARTIRE DALLA MATRICOLA 131002754	CAPILLARY 0,91MX1,7MT FROM S/N 131002754	*	*	*	*	*
BA105101-001	89	VENTOLA A1175HBT 115V 50/60HZ	FUN BLADE A1175HBT 115V 50/60HZ	*	*			*
BD105101-001	89	VENTOLA A2175HBT 230V 50/60HZ	FUN BLADE A2175HBT 230V 50/60HZ	*		*	*	
B0102106-001	90	ASSIEME TUBI CONDENSATORE+TEE+TEE+FILTRO	KIT COPPER PIPE CONDENSER+CUPPER TEE+CUPPER TEE+FILTER	*	*			
A0005103-001	92	FUSIBILE Φ5X20MM 315mA RAPIDO	FAST FUSE 315MA 5X20	*	*	*	*	*
B0000113-001	93	STAFFA COPERTURA ELETTRONICA QK	ELECTRONIC BOARD COVER BRACKET	*	*	*	*	*
B0006113-001	94	CHIAVE SERRATURA CUPOLA	KEY FOR TRANSPARENT COVER WITH LOCK	*	*	*	*	*
B0102108-001	95	TUBO CU FILTRO RAME-OLAB QK1 D6X4,5	COPPER PIPE OLAB QK1 D6X4,5	*	*	*	*	*
A0102103-002	96	CORPO VALVOLA 1VIA NC DN1,2 8433/B-R OLAB	OLAB BODY VALVE 1WAY NC DN1,2 8433/B-R	*	*	*	*	*
AF005102-001	97	BOBINA 100/50-60 CE 6000BH/E1FN OLAB	OLAB COIL 100/50-60 CE 6000BH/E1FN	*				*
AA005102-001	97	BOBINA 120/50-60 UL 11000BH/G6IU-2 OLAB	OLAB COIL 120/50-60 UL 11000BH/G6IU-2	*	*			*
AD005103-001	97	BOBINA 230/50-60 CE 6000BH/K5FN OLAB	OLAB COIL 230/50-60 CE 6000BH/K5FN	*		*	*	
A0000117-001	98	BOCCOLA CENTRAGGIO MOTORID./ALBERO	GEAR MOTOR BUSHING	*	*	*	*	*
A0000118-001	100	LUBRIFICANTE ALIMENTARE (VASELINA)	LUBRICANT FOOD CONTACT	*	*	*	*	*
B0003113-001	103	UTENSILE RIMOZIONE GUARNIZIONE B0003111-001 "DE156"	GASKET REMOVAL TOOL FOR B0003111-001 CODE	*	*	*	*	*
B0004113-001	104	ELICA VERTICALE CON BOCCOLA INOX	QUICKREAM VERTICAL AUGER WITH BUSHING	*	*	*	*	*
B0003118-001	107	MOLLA CHIUSURA RUBINETTO	TAP CLOSING SPRING	*	*	*	*	*
B0003115-001	108	SPINA BLOCCAGGIO MOLLA	SPRING LOCKING PIN	*	*	*	*	*
B0003119-001	109	STAFFA RIDUZIONE APERTURA RUBINETTO	OPENING TAP REDUCTION BRACKET	*	*	*	*	*
B0003110-002	110	ASSIEME RUBINETTO	COMPLETE TAP	*	*	*	*	*
B0004115-001	111	GHIERA BLOCCAGGIO PER COPPIA CONICA B0004114-007	LOCKING RING FOR BEVEL GEAR B0004114-007	*	*	*	*	*
B0004116-001	112	GUARN.OR2093 SIL.ROS. ALIM. INGRAN.	GEAR SILICON GASKET OR2093	*	*	*	*	*
B0004114-007	114	COPPIA CONICA US PA6FV+POM-C ESAG. Per elica orizzontale B0004102-003	BEVEL GEAR US PA6FV+POM-C ESAG. For horizontal auger B0004102-003	*	*	*	*	*
B0100102-002	115	KIT UPGRADE ELICHE-INGR. QK USA	KIT UPGRADE AUGER-GEARS QK USA	*	*	*	*	*
B0106101-002		IMBALLO QUICKREAM 1	QUICKREAM 1 packaging	*	*	*	*	*